

Feedback from partners:

"We have moved a long way in a short period of time to want to work as part of a wider system and support partners to deliver"

"not precious about organisational boundaries / want to do what is right for patients"

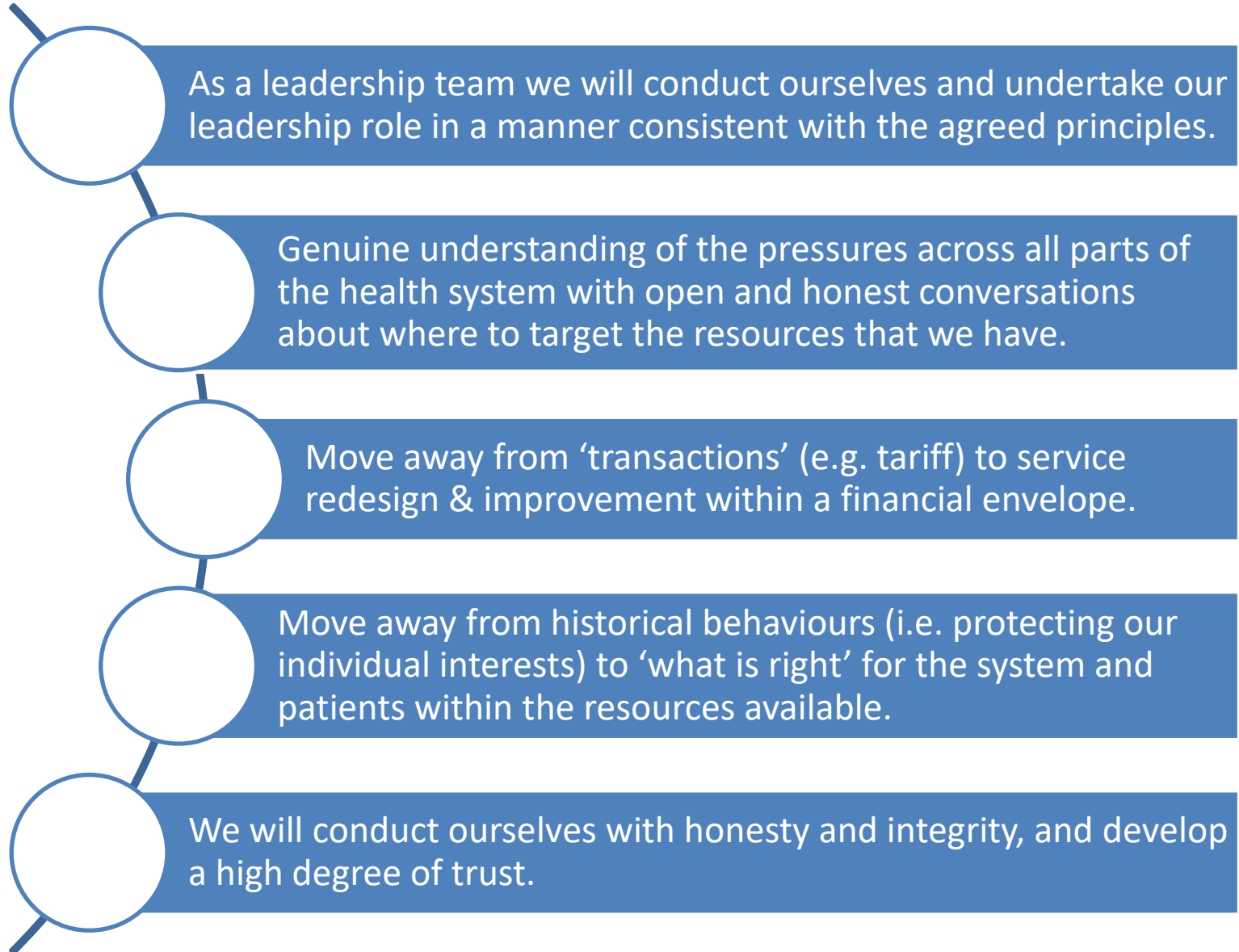
"people focused, solid values to meet local needs in the most effective way as a collective partnership"

"biggest benefits have been around GP/consultant working relationships – has built better clinical working relationships"

"referrals are better quality and have more work up done in primary care"

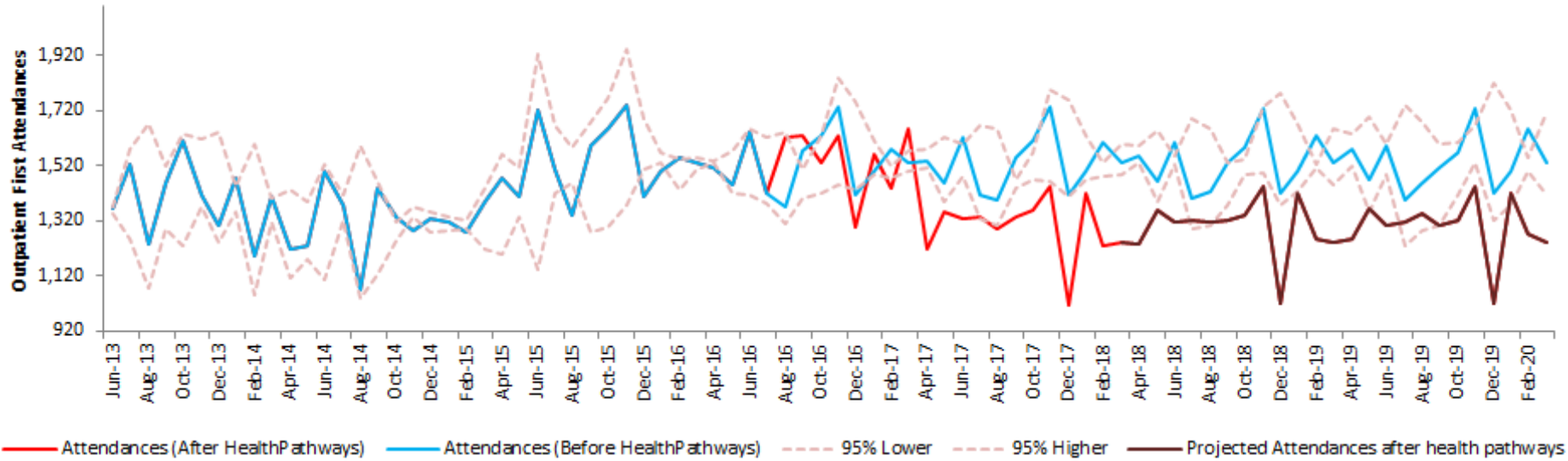
"I'd rather have this way of working than not"

System ways of working highlights:

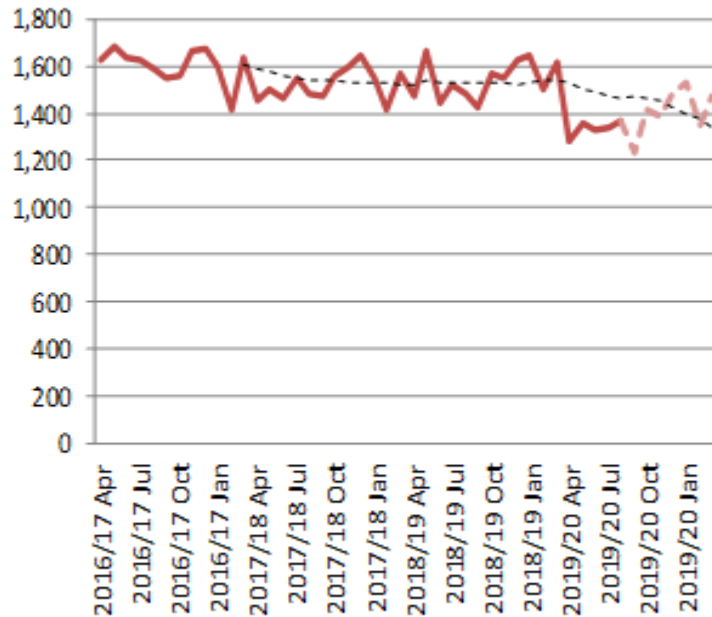


Activity trends:

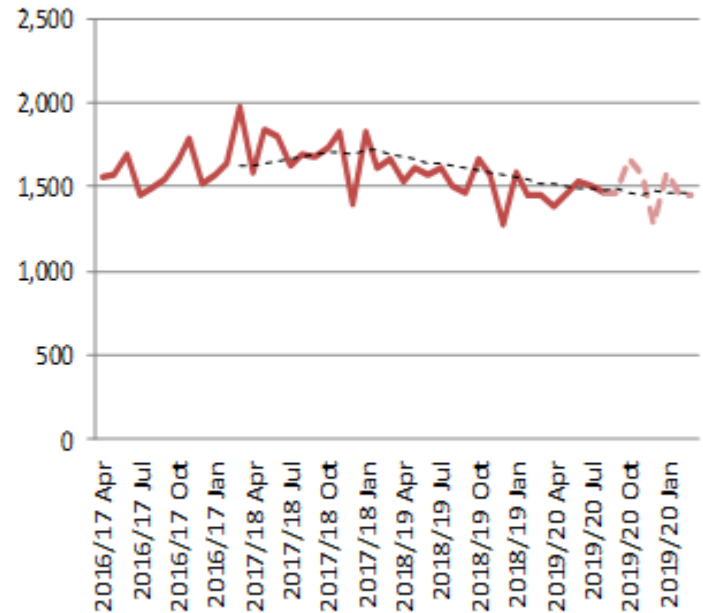
Outpatient First Attendances



Non Elective Activity (Spells) Trend

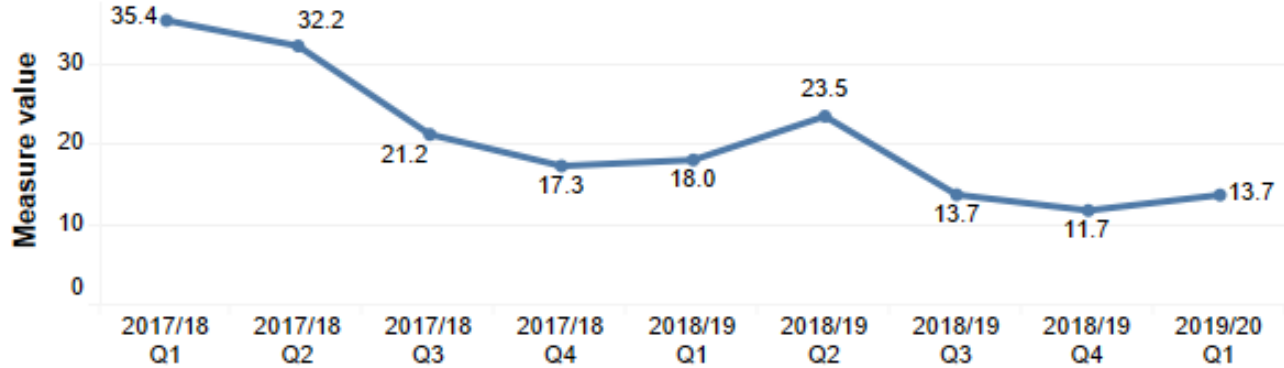


Elective Activity (Spells) Trend

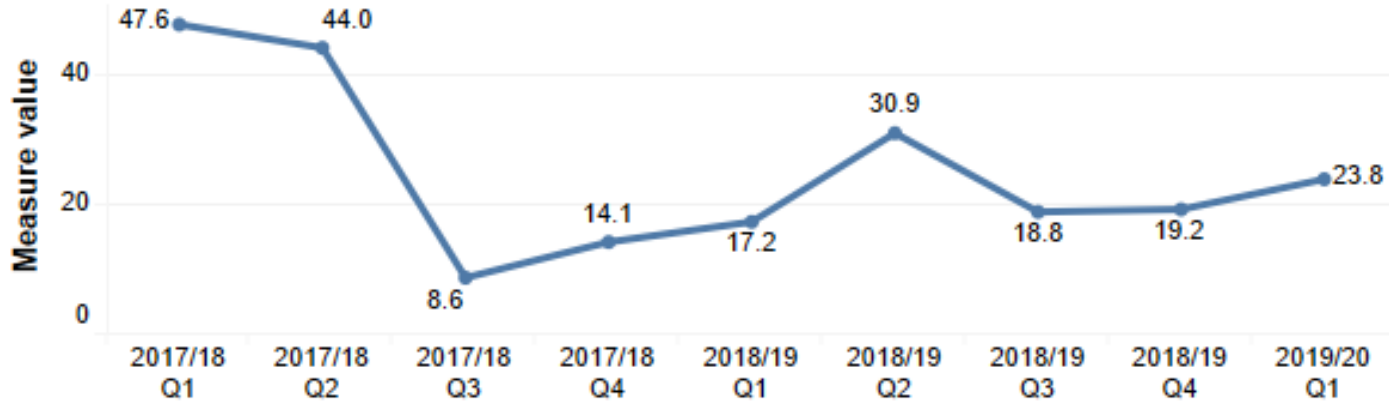


Joint commissioning improvements:

Number assessed as eligible for Standard CHC - per 50k



Number eligible at the end of the quarter for Fast Track (Snapshot) - per 50k



Contact details:

kate.hudson6@nhs.net

julia.pattison@chsft.nhs.uk